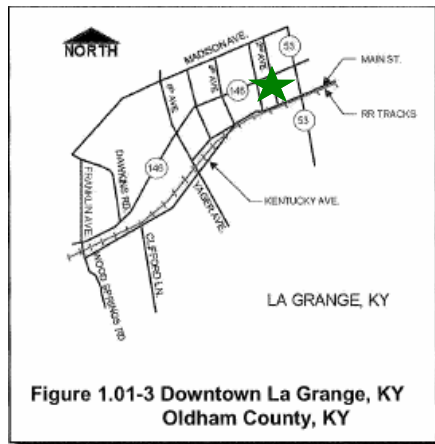


Downtown Main Street Sidewalk Improvements

Downtown LaGrange contains nearly .62 miles of shared use trail that begins at the Historic Louisville & Nashville Train Depot , which serves as the trail head beginning at East Main Street and ending at Kentucky Ave and 6th Street.

In order to create better connectivity between the trail head and the terminus at 6th Street, sidewalk and pedestrian improvements through downtown LaGrange are being pursued.



Community Support

Oldham County is very excited about the future of bike and pedestrian trail projects in the county because of the tremendous amount of support that our residents have shown and will continue to show through their involvement with various non-profit and volunteer organizations.

If you are interested in learning about ways in which to become involved, please contact Oldham County Planning and Zoning for more information.

OLDHAM COUNTY PLANNING AND ZONING 100 West Jefferson Street LaGrange, KY 40031



Duane Murner
Oldham County
Judge-Executive

Thank You for Your
Participation!

Oldham
County Bike
and
Pedestrian
Trails
Public
Meeting

Oldham County Fiscal Court
Strand Associates Engineering
CDP Engineers

Monday, December 11, 2006
6:00 pm — 8:00 pm
John Black Community Center

Oldham County Bike and Pedestrian Trails

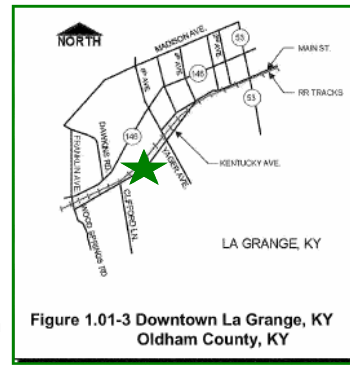
Since 1998 it has been Oldham County's mission to provide better bike and pedestrian access for the residents. There are several opportunities for bike and pedestrian access in the county:



These three projects make up Phase 1 of Oldham County Bike and Pedestrian Trails. Each will provide connectivity within and around LaGrange, by providing access through connected share use trails, and sidewalk improvements.

Kentucky Avenue Sidewalk Improvements

There is approximately 1/4 mile portion of sidewalk disconnection that exist along the residential area of Kentucky Ave. Strand Associates Engineering Firm has identified



an appropriate alignment for this sidewalk extension to make pedestrian travel along Kentucky Avenue safer and more pleasurable.

Traffic Calming for Safety

Traffic Calming is the process by which measures are used to "mitigate traffic safety problems or reduce speeding and cut through traffic problems."

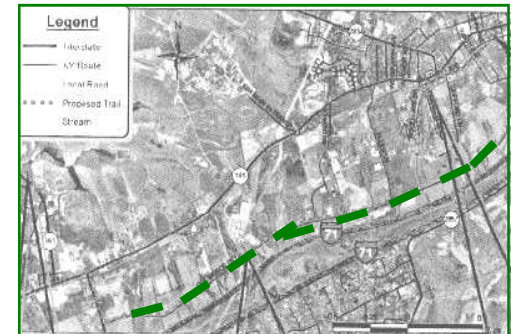
It is hoped that Kentucky Avenue will also be a place where cyclists may utilize on-road facilities, while pedestrians use the sidewalk facilities. In order to accomplish this, speeding and thru traffic must be controlled along Kentucky Avenue. According to Strand Associates Engineers, this can be accomplished through the use of:

- Signage
- Pavement Markings
- Speed Humps
- Increase Police Presence

Commerce Parkway Shared Use Trail

Commerce Parkway is a 3 mile east-west thoroughfare through the Oldham County Industrial Park, that geographically connects the areas of LaGrange and Buckner in Oldham County.

The County has worked with Strand Associates in the completion of engineering for a 2 mile portion that extends west from Allen Lane to Hwy 393. Future design of a shared use trail will extend east from Allen to Hwy 53, providing pedestrian and bike access to commercial establishments in LaGrange.



Commerce Parkway Rest Area and Amenities

An important aspect of any trail system are it's amenities. The Commerce Parkway Shared Use Trail will house a rest area which will include bench, and bike rack facilities.

